

WATERHOUSE & DODD

NEW YORK | LONDON



MODERN AND POST-WAR ART

We are delighted to present this exhibition of Modern and Post-War art at our New York gallery. Please call or email to reserve a time to view the show as we are limiting the number of visitors to two at any time. We of course practice safe procedures for our clients and staff. This exhibition is also available for viewing online.

Waterhouse & Dodd specialize in Modern and Post-War art, and are pleased to consider works to purchase or take on consignment.

[Click here](#) to view details and large images of all exhibits.

Front cover:

Robert Motherwell

1915-1991

Two Figures with Green Stripe, 1960-1964

Signed with initials upper right

Oil on paperboard

26 x 39.5 in / 66 x 100 cm

[Click to read more](#)

MODERN & POST-WAR ART

December 1st, 2020 - January 15th, 2021

Viewing by Appointment

15 East 76th Street
New York, NY 10021

newyork@waterhousedodd.com
+1 212 717 9100

www.waterhousedodd.com

Richard Pousette-Dart

1916-1992

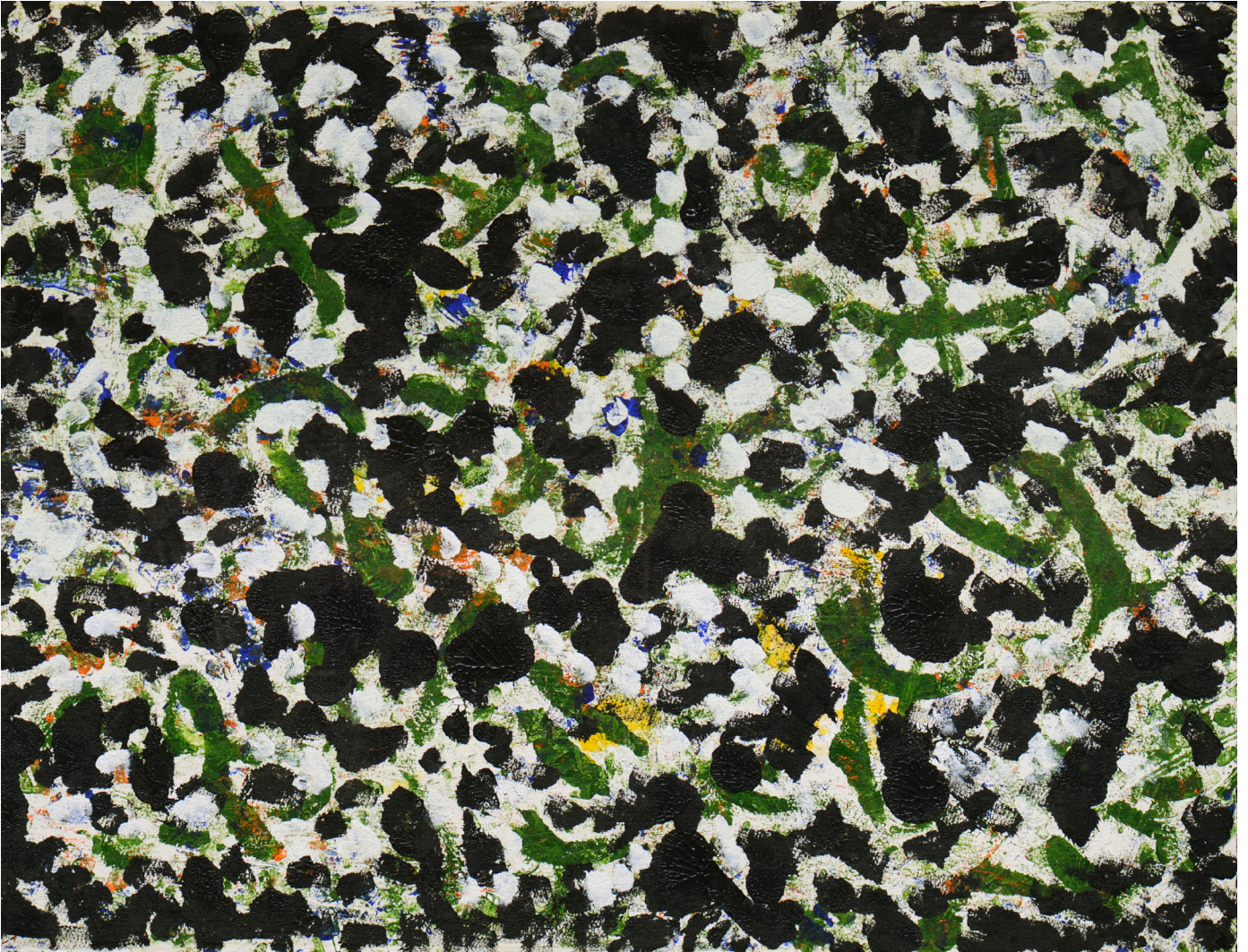
To Greet the Muse Green, 1980s

Stamped on verso

Acrylic on paper

23 x 30 in / 58 x 76 cm

[Click to read more](#)





Sam Francis
1923-1994

Untitled, circa 1982
Signed in pencil lower right
Monotype on rag paper
16.5 x 20 in / 42 x 51 cm

This work is registered by the Sam Francis Estate with the number SF79-265

[Click to read more](#)



Sam Francis
1923-1994

Untitled (SF79-265), 1979
Inscribed on verso
Acrylic on paper
9 x 12 in / 23 x 30.5 cm

This work is registered by the Sam Francis Estate with the number SF79-265

[Click to read more](#)



Michael Goldberg

1924-2007

Untitled, circa 1960

Signed lower left

Gouache on board

18.5 x 15.5 in / 47 x 40 cm

[Click to read more](#)



Michael Goldberg

1924-2007

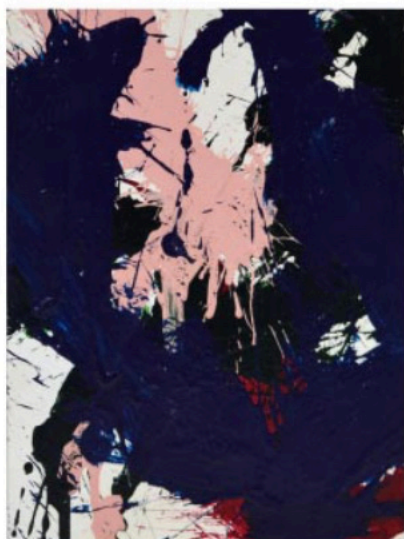
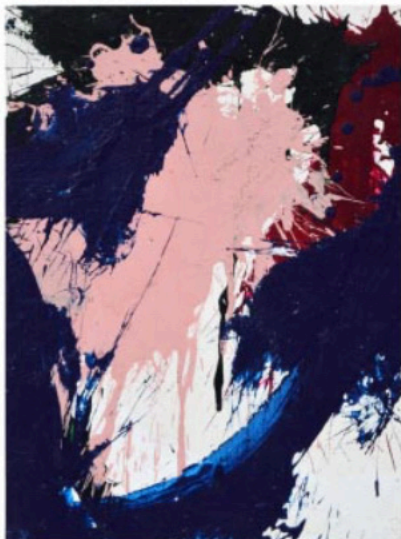
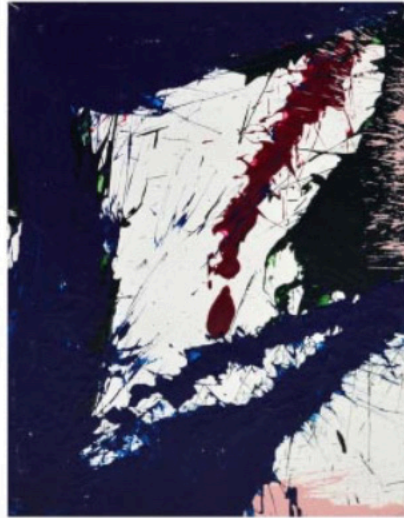
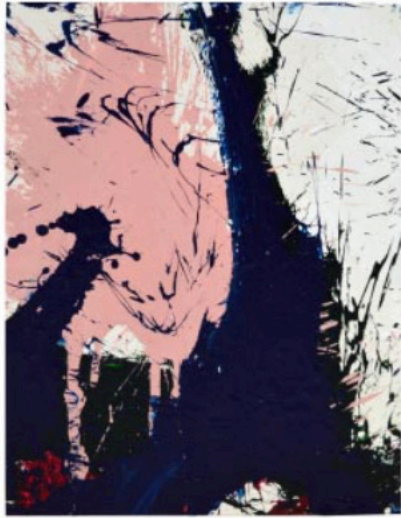
Untitled Abstract Composition, circa 1960

Signed lower left

Gouache on board

7 x 8.5 in / 18 x 22 cm

[Click to read more](#)



Norman Bluhm

1921-1999

Composition in Blue & Pink, 1967

Signed and dated 1967

Set of 4

Oil, acrylic and gouache on paper laid canvas

Each 12 x 9 in / 30 x 22 cm

[Click to read more](#)



Norman Bluhm
1921-1999

Untitled WhiteBbackground, 1965
Signed & dated 65
Oil on canvas
29 x 46 in / 73 x 116 cm

[Click to read more](#)



Jon Schueler

1916-1992

Summer Sea, 1956

Signed on verso

Oil on canvas

18 x 24 in / 46 x 61 cm

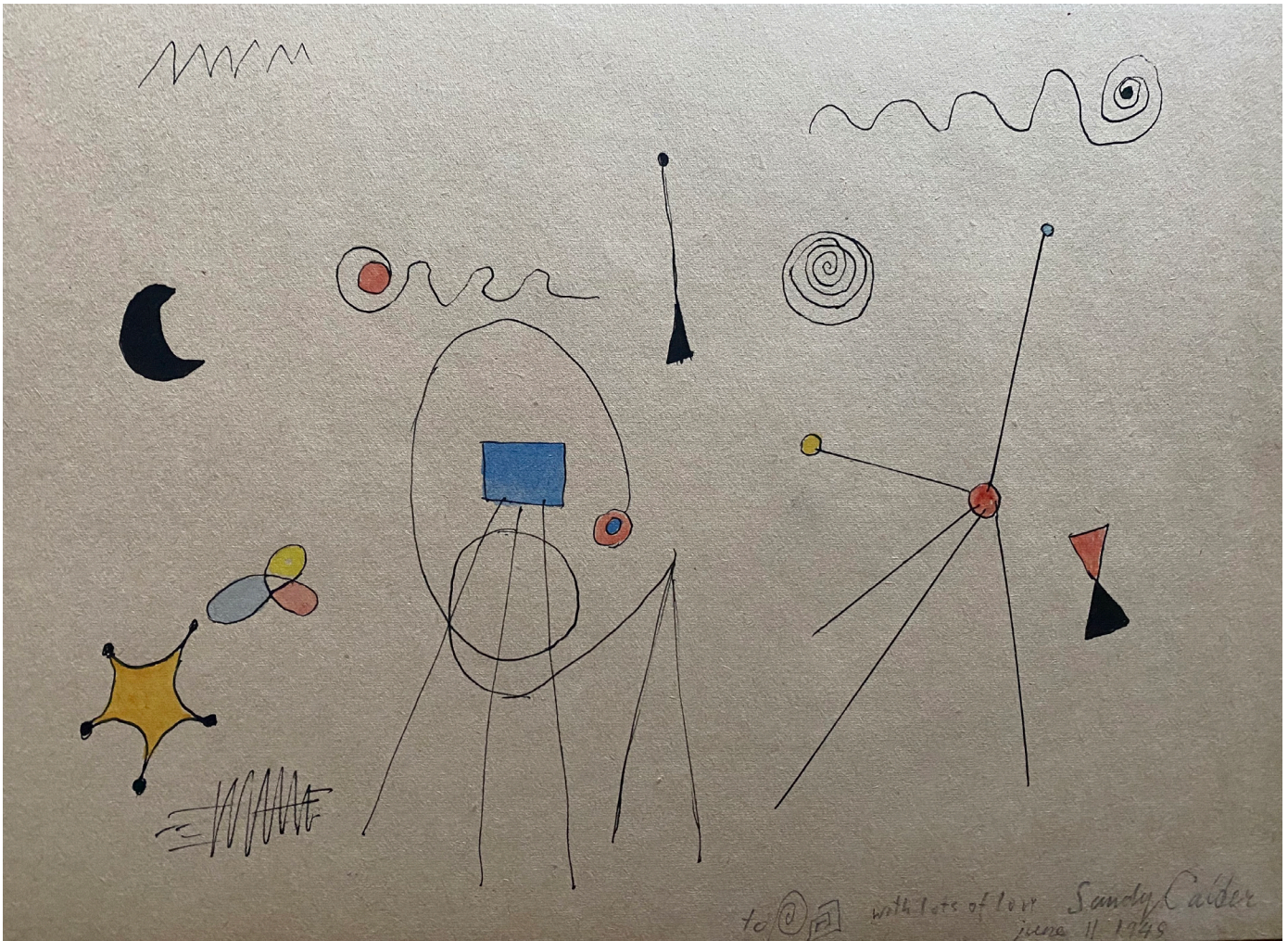
[Click to read more](#)



Jon Schueler
1916-1992

Burning, 1956
Signed on verso
Oil on canvas
23 x 35 in / 58 x 89 cm

[Click to read more](#)

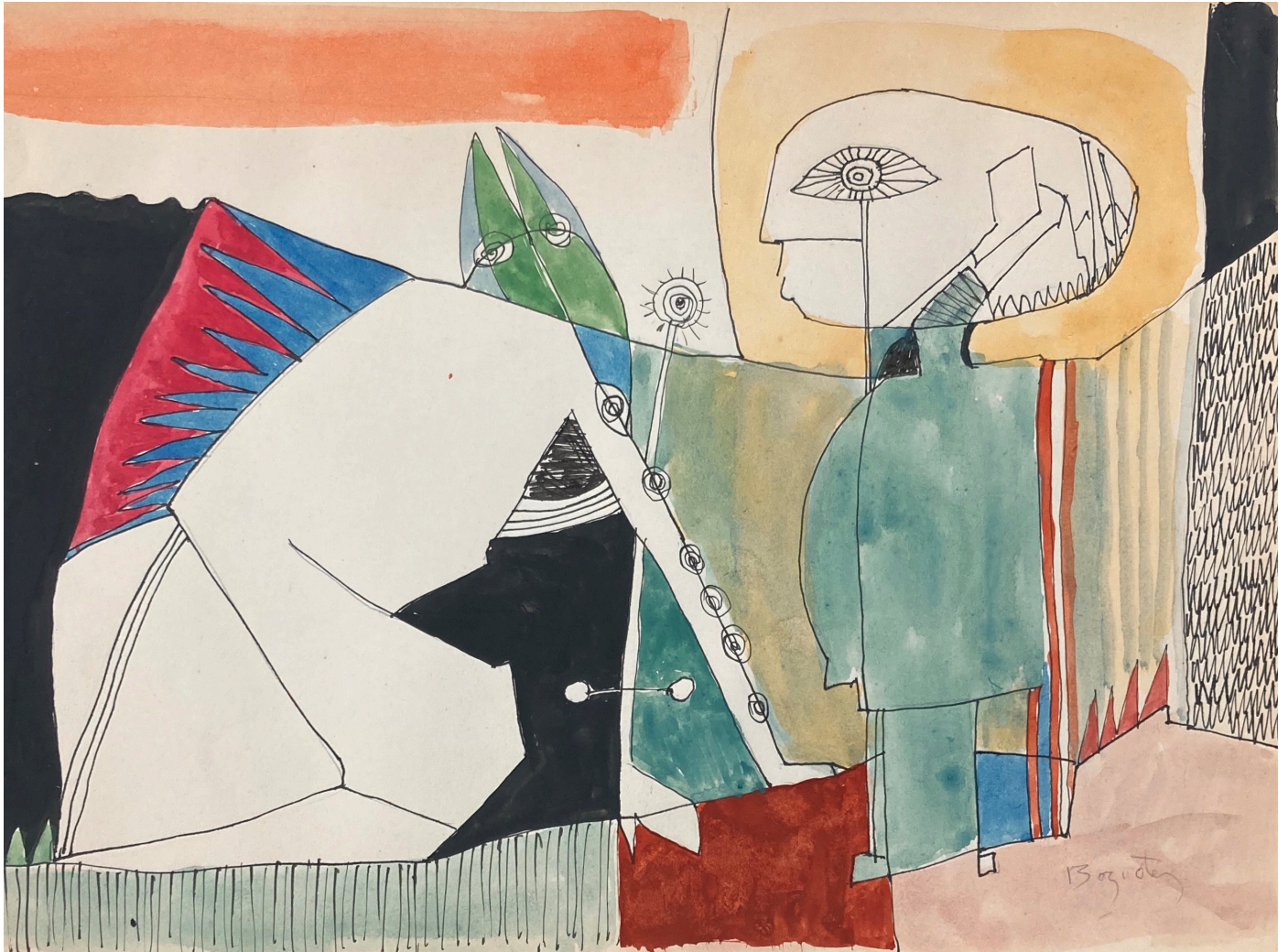


Alexander Calder
1898-1976

June 11, 1948
Signed, dated and dedicated lower right
Ink, pen and watercolor on paper
7.5 x 10.5 in / 19 x 26.5 cm

Sold subject to receiving the Calder Foundation Archives number

[Click to read more](#)



William Bazotes

1912-1963

Study for Fallen Angel, circa 1947-48

Signed lower right

Watercolor, ink and pencil on paper

7.5 x 12 in / 19 x 28 cm

[Click to read more](#)

David Hockney

Born 1937

Mark, Strand Hotel, Rangoon, 1971

Titled, dated and initialled lower right

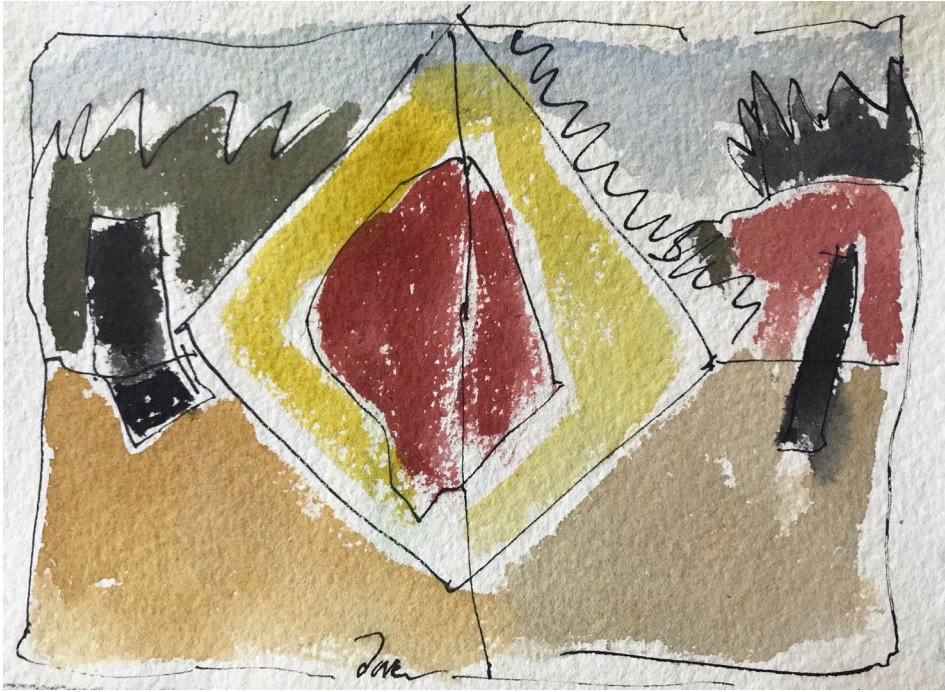
Ink on paper

14 x 17 in / 35 x 43 cm

[Click to read more](#)



Mark Strand Hotel, Rangoon
Dec 4th 1971
60



Arthur Garfield Dove

1880-1946

Abstract Composition
Signed lower center
Watercolour & ink on paper
4.5 x 6.5 in / 12 x 16.5 cm

[Click to read more](#)



Arthur Garfield Dove

1880-1946

Abstract Landscape
Signed
Watercolour & ink on paper
4.5 x 6.5 in / 12 x 16.5 cm

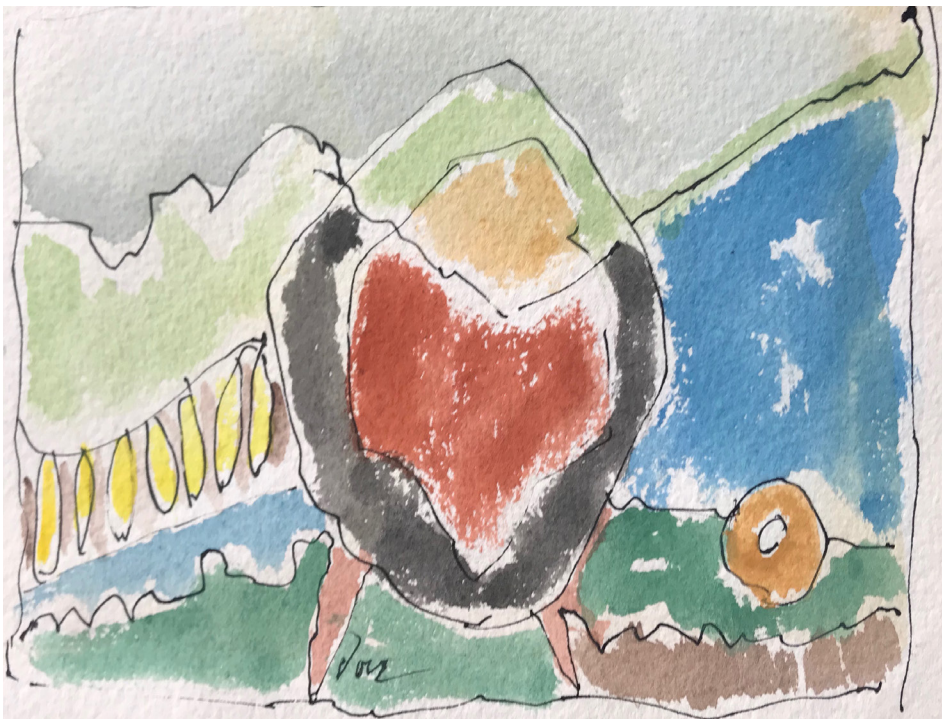
[Click to read more](#)



Arthur Garfield Dove
1880-1946

Abstract Nude
Signed lower center
Watercolour, ink & pencil on paper
5.5 x 7.5 in / 14 x 19 cm

[Click to read more](#)



Arthur Garfield Dove
1880-1946

Abstract Landscape
Signed
Watercolour & ink on paper
5 x 7.5 in / 13 x 19 cm

[Click to read more](#)



Milton Avery
1885-1965

Burned Hill by the Sea, 1938
Watercolor on paper
Signed lower right
22 x 30 in / 56 x 76 cm

[Click to read more](#)



Milton Avery

1885-1965

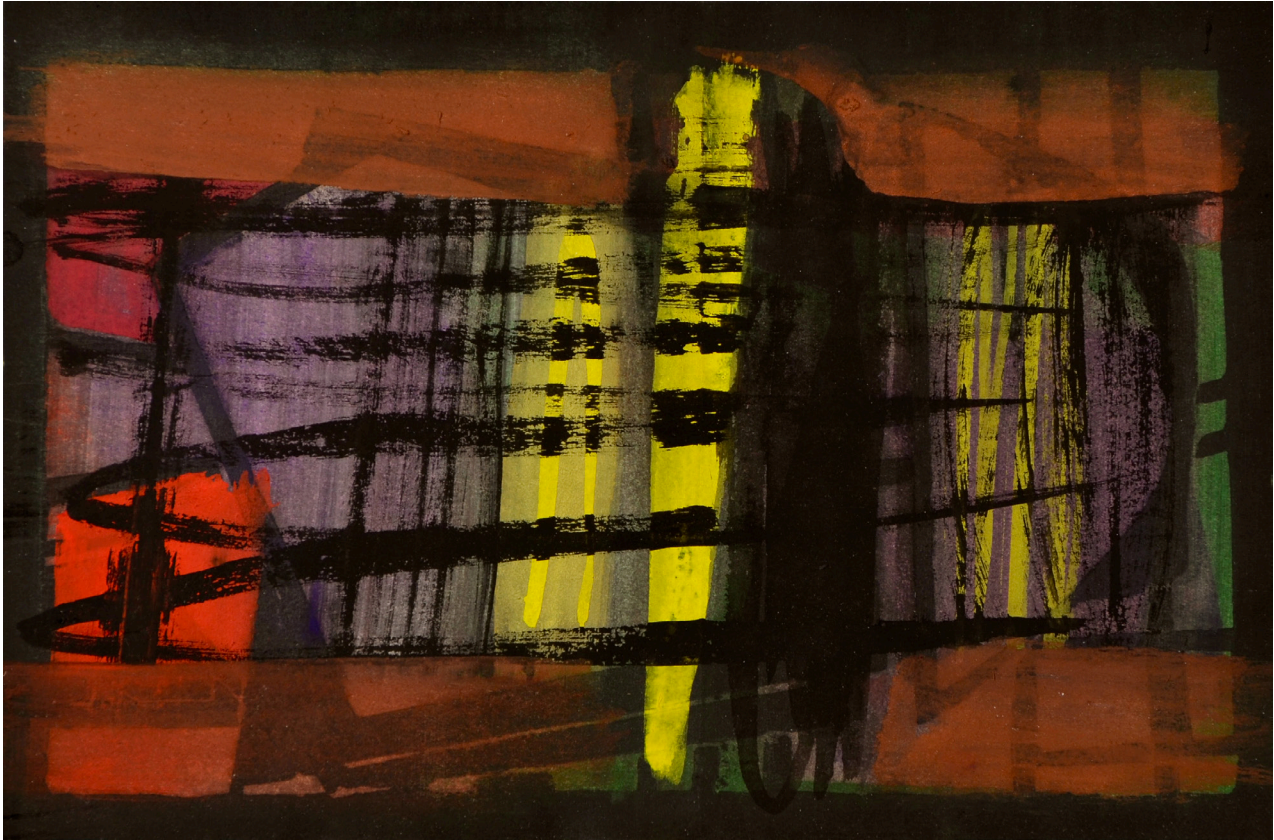
Woman in Blue, 1935

Signed lower left, signed again and inscribed with title on stretcher

Oil on canvas

36 x 28 in / 91 x 71 cm

[Click to read more](#)



Wilhelmina Barns-Graham

1912-2004

Autumn Landscape, 1958

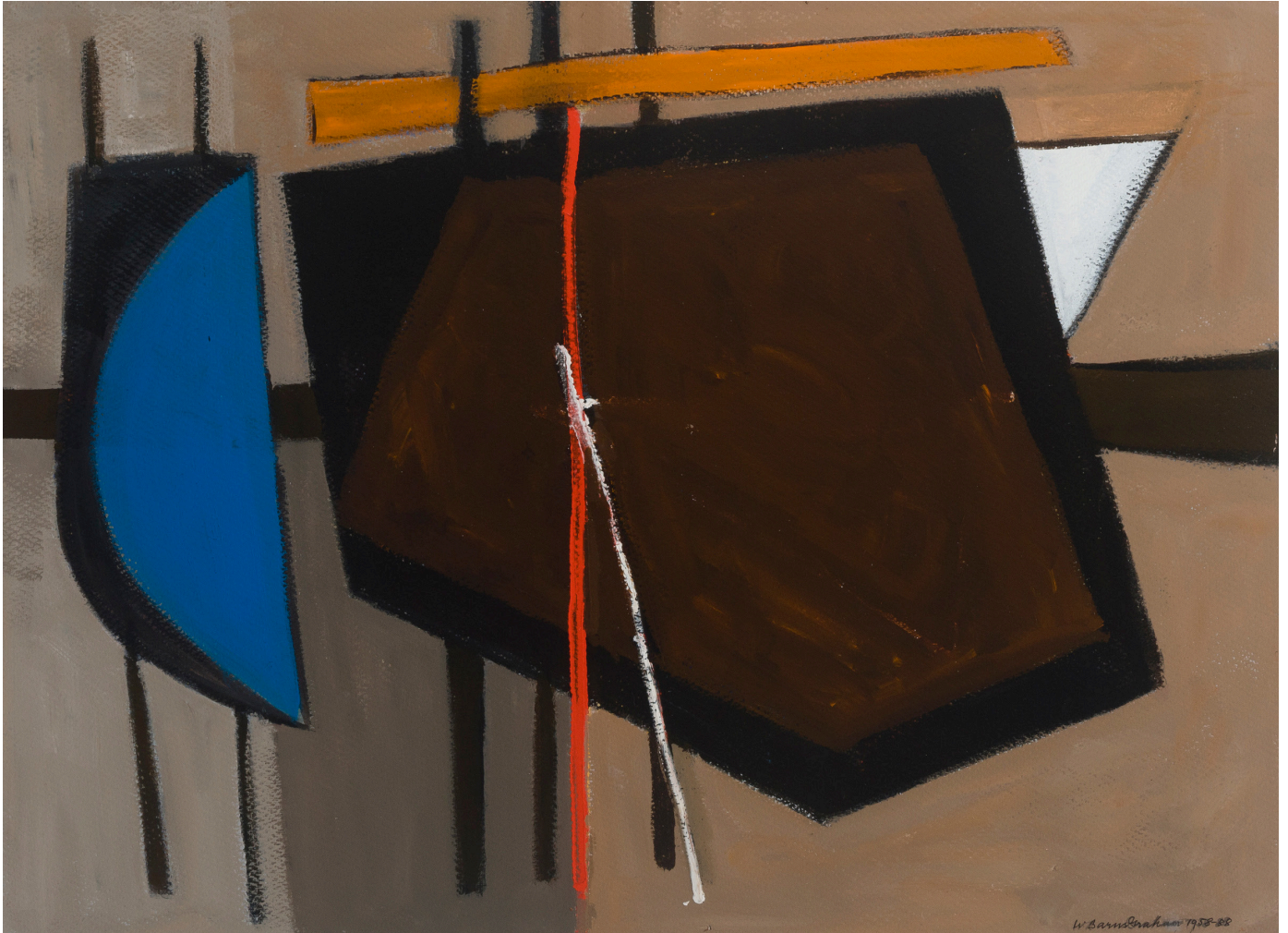
Signed & dated 1958

Gouache on paper

6 x 9 in / 14.5 x 22 cm

This work is in London and will not be on view during the exhibit unless by prior arrangement

[Click to read more](#)



Wilhelmina Barns-Graham
1912-2004

Brown with Blue (Geoff and Scruffy Series), 1988
Signed & dated 1958-88
Acrylic on paper
22 x 30 in / 56.5 x 76.5 cm

This work is in London and will not be on view during the exhibit unless by prior arrangement

[Click to read more](#)

Wilhelmina Barns-Graham

1912-2004

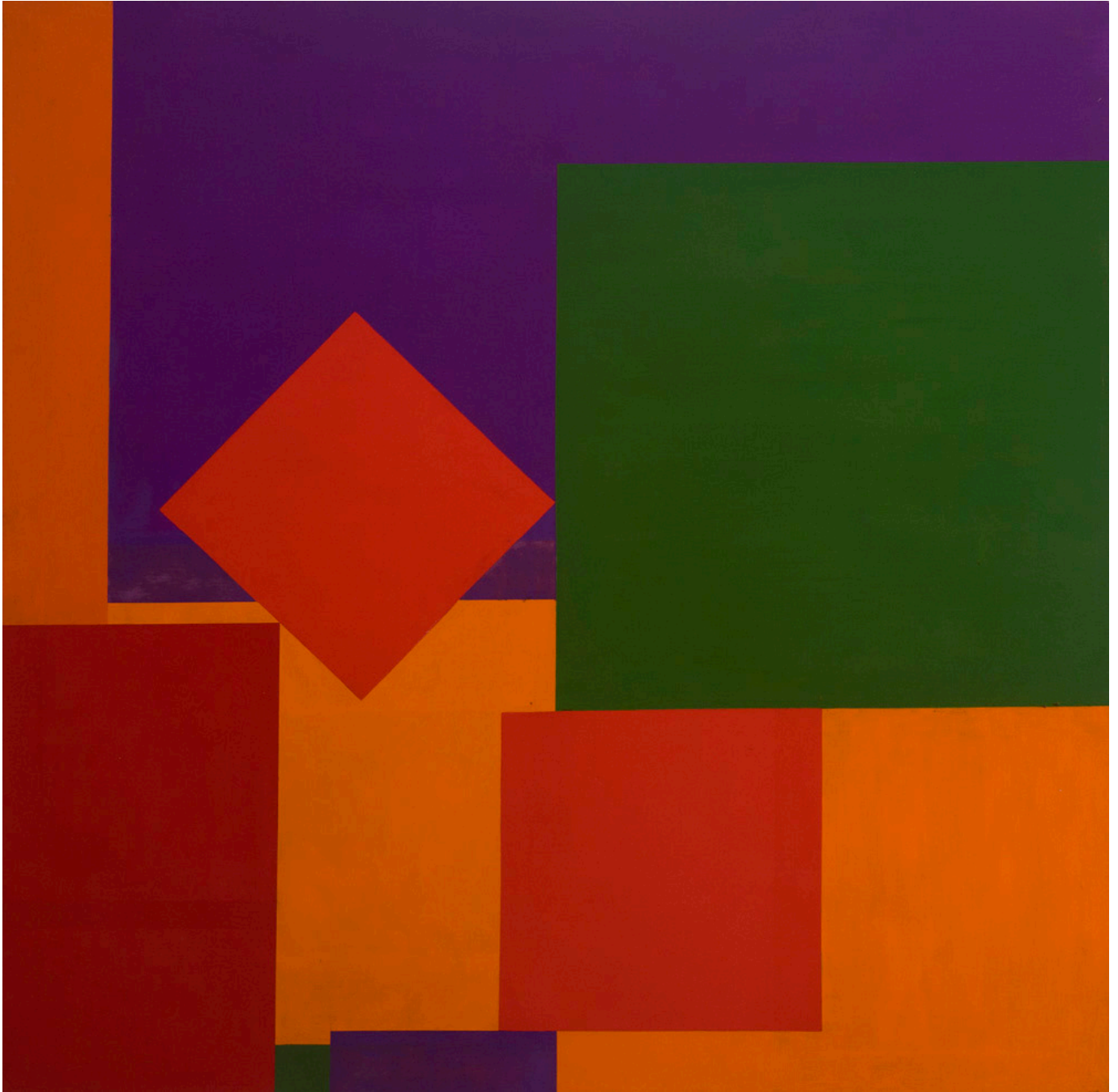
Two Pairs Complementaries of Equal Amount, 1970

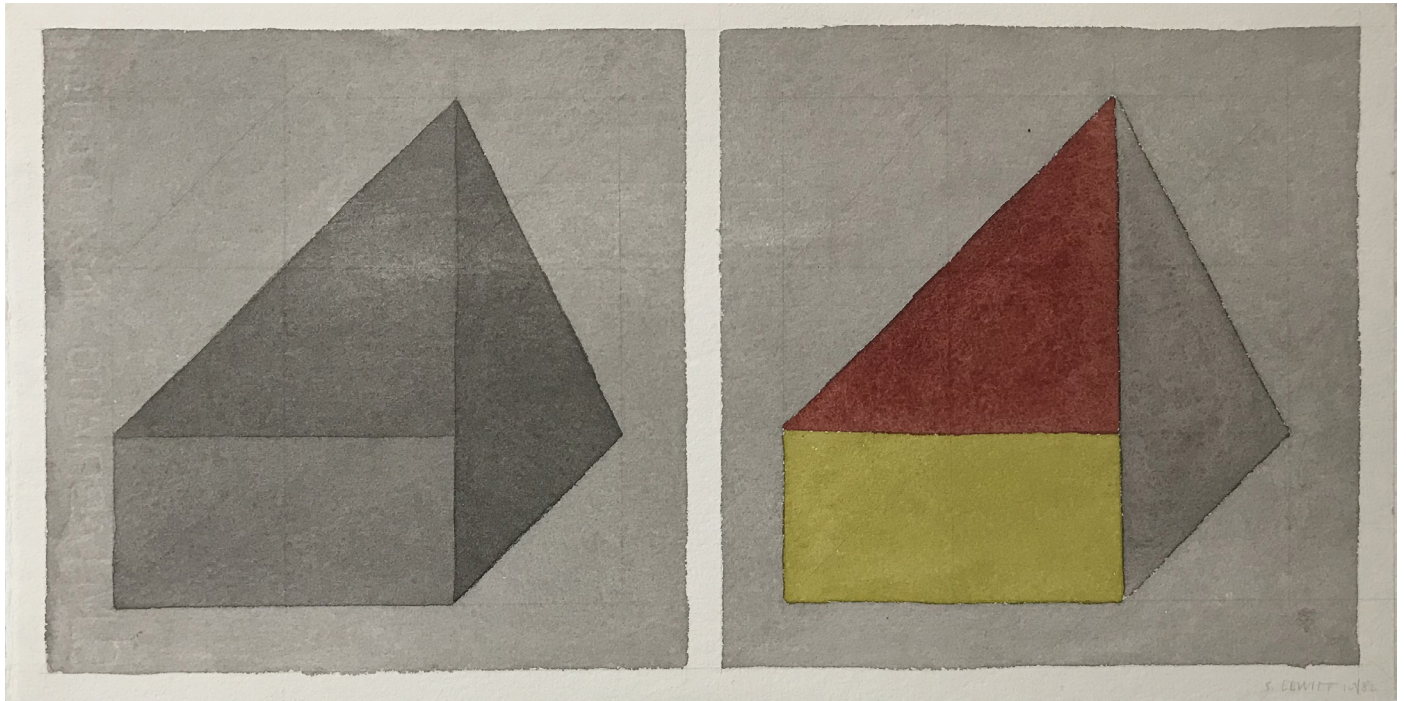
Oil on canvas

48 x 48 in / 122 x 122 cm

This work is in London and will not be on view during the exhibit unless by prior arrangement

[Click to read more](#)





Sol Lewitt

1928-2007

Untitled, 1982

Signed & dated

Pencil & watercolour on paper

8.5 x 16 in / 21.5 x 41 cm

[Click to read more](#)



Frank Stella

Born 1936

Ifafa I, 1967

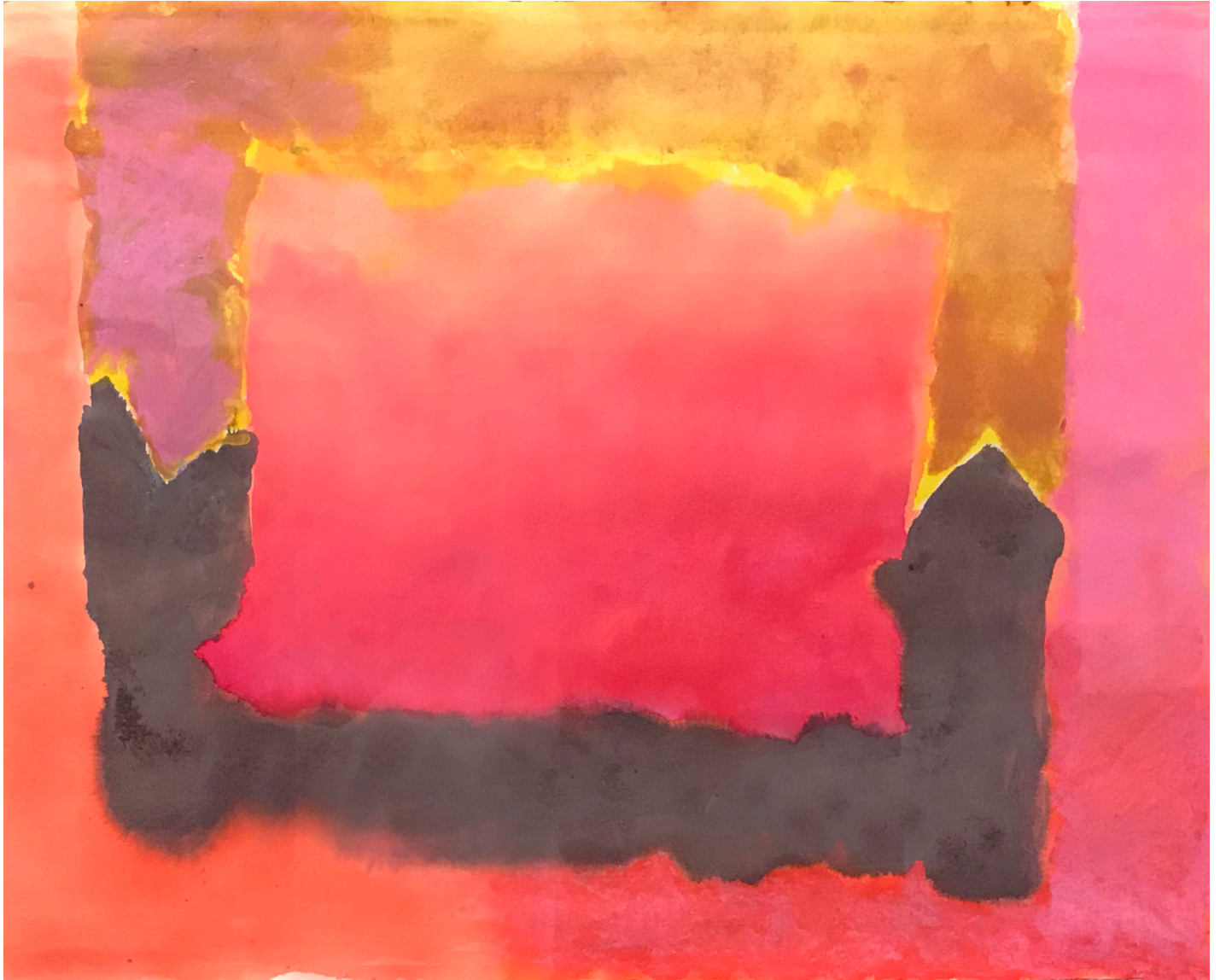
Signed & dated lower right;

inscribed "Collage + printing" lower left

Unique collage on paper

15 x 22 in / 38 x 56 cm

[Click to read more](#)



Trevor Bell

1930-2017

Pink-Orange-Brown-Gold, 1982

Signed in pencil

Gouache on paper

22 x 30 in / 56 x 76 cm

[Click to read more](#)



Trevor Bell
1930-2017

Purple-Green-Pink, late 1980s
Gouache on paper
24 x 29 in / 61 x 74 cm

[Click to read more](#)

Dan Christensen

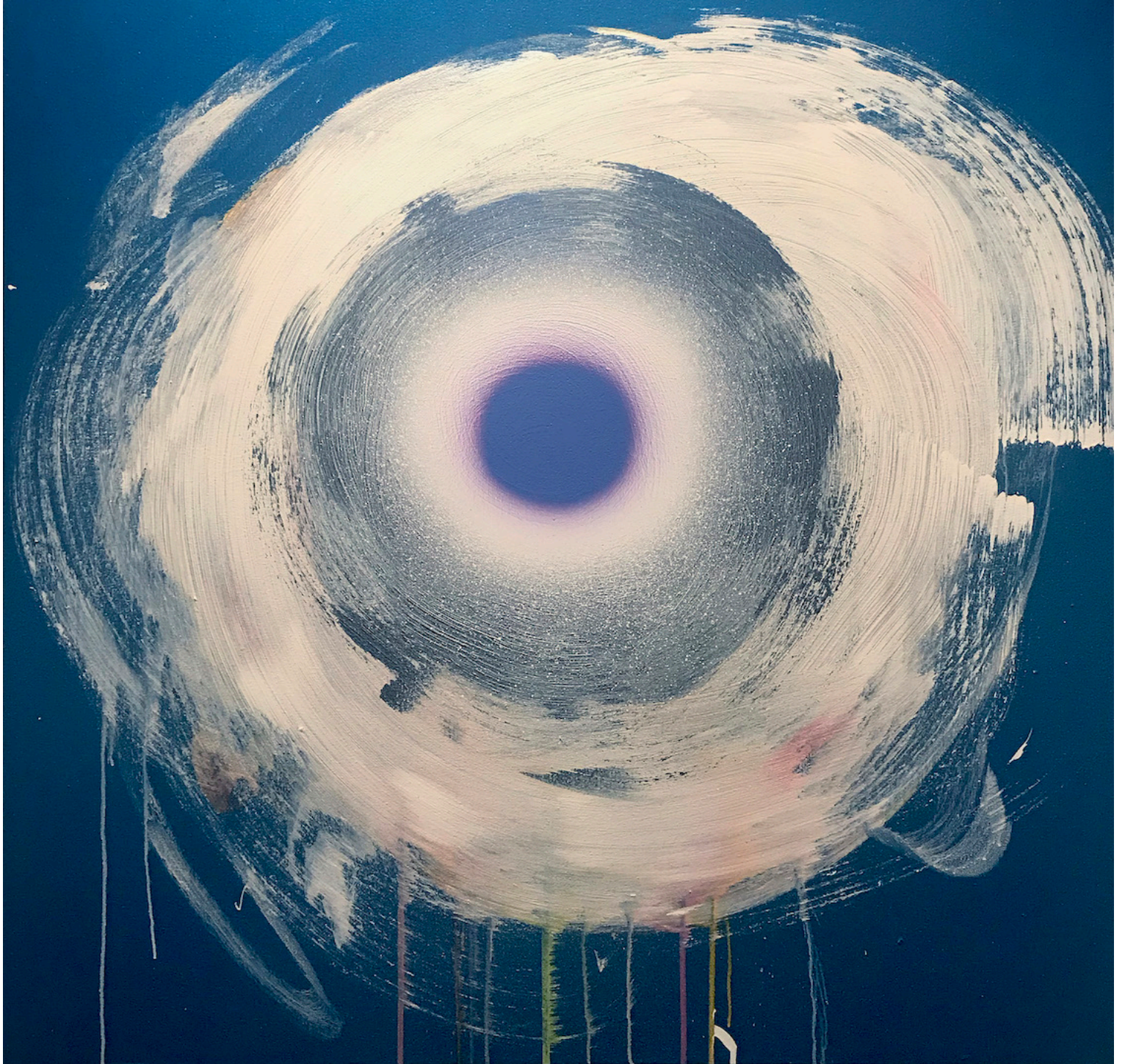
1942-2007

Blues for Kenny, 1997

Acrylic on canvas

54 x 54 in / 137 x 137 cm

[Click to read more](#)



Dennis Creffield

1931-2018

Lewes Crescent & Garden from the East, 1970

Signed, titled & dated on reverse

Oil on canvas

48 x 48 in / 122 x 122 cm

*This work is in London and will not be on view during the exhibit
unless by prior arrangement*

[Click to read more](#)



Keith Haring

1958 - 1990

Subway Drawing, 1980-85

Chalk on black paper

38 x 24 in / 96 x 60 cm

[Click to read more](#)





Marino Marini
1901-1980

Cavallo, 1954
signed and dated lower left
Gouache on paper laid on canvas
25 x 17 in / 62 x 43 cm

[Click to read more](#)



Philippe Hiquily
1925-2013

La Reorneadora, 2006
Signed P.H.
Corten weathering steel mobile
48 x 17 x 28 in / 122 x 43 x 72 cm
Edition 8 of 8

[Click to read more](#)